

*New perspectives
in rectoscopy!*

Recto
Lution System

RectoLution System

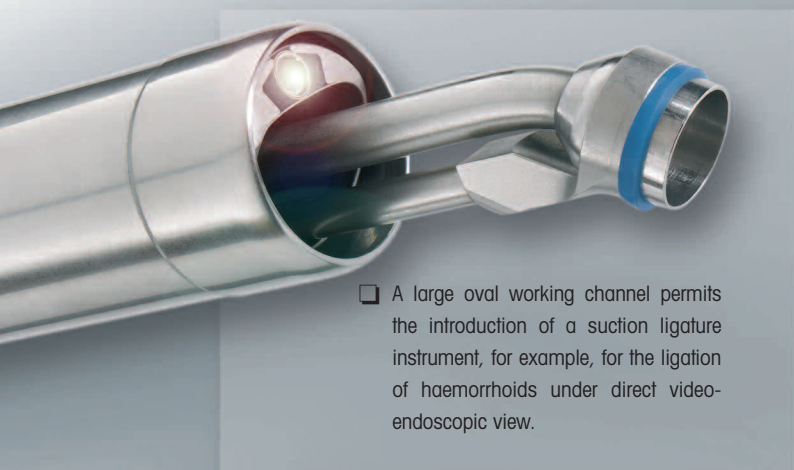
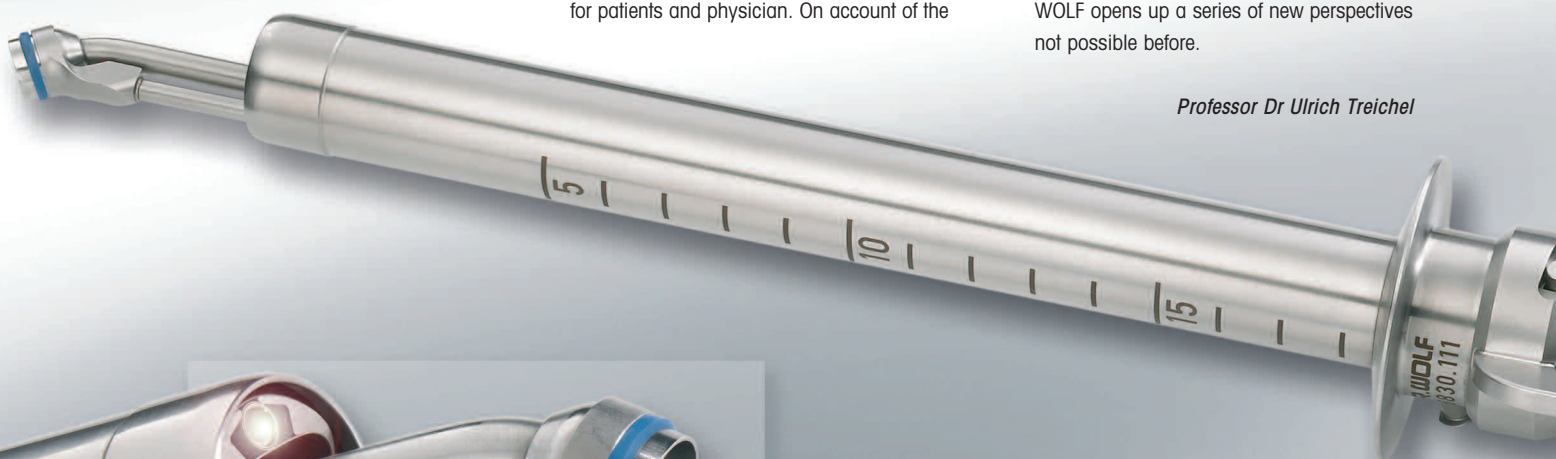
New perspectives in rectoscopy!

Rectoscopy is one of the oldest forms of endoscopic procedure carried out, and yet it has not benefited from the advances made in technical documentation during the last decades.

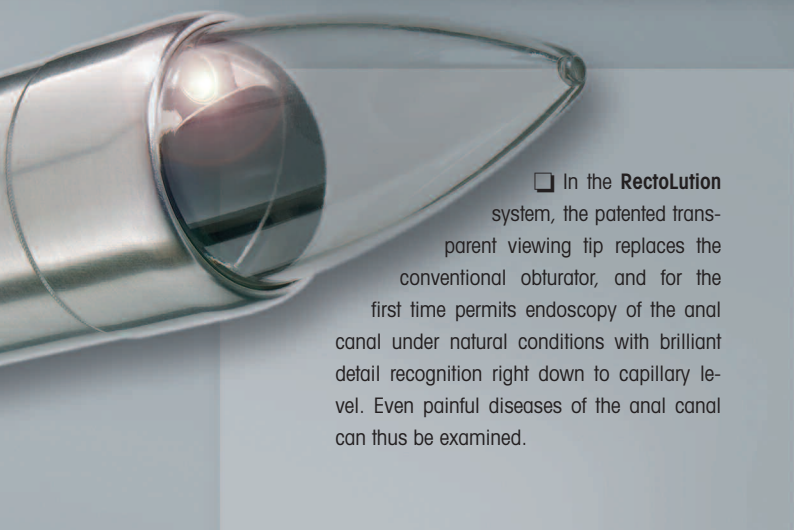
Anorectal diseases, especially haemorrhoidal complaints, are one of the most frequent reasons for seeking medical help. The classical examination methods are equally unpleasant for patients and physician. On account of the

"up till now" limited technique, there were considerable limitations in the documentation of the treatment as well as in training. The **RectoLution** system produced by RICHARD WOLF opens up a series of new perspectives not possible before.

Professor Dr Ulrich Treichel



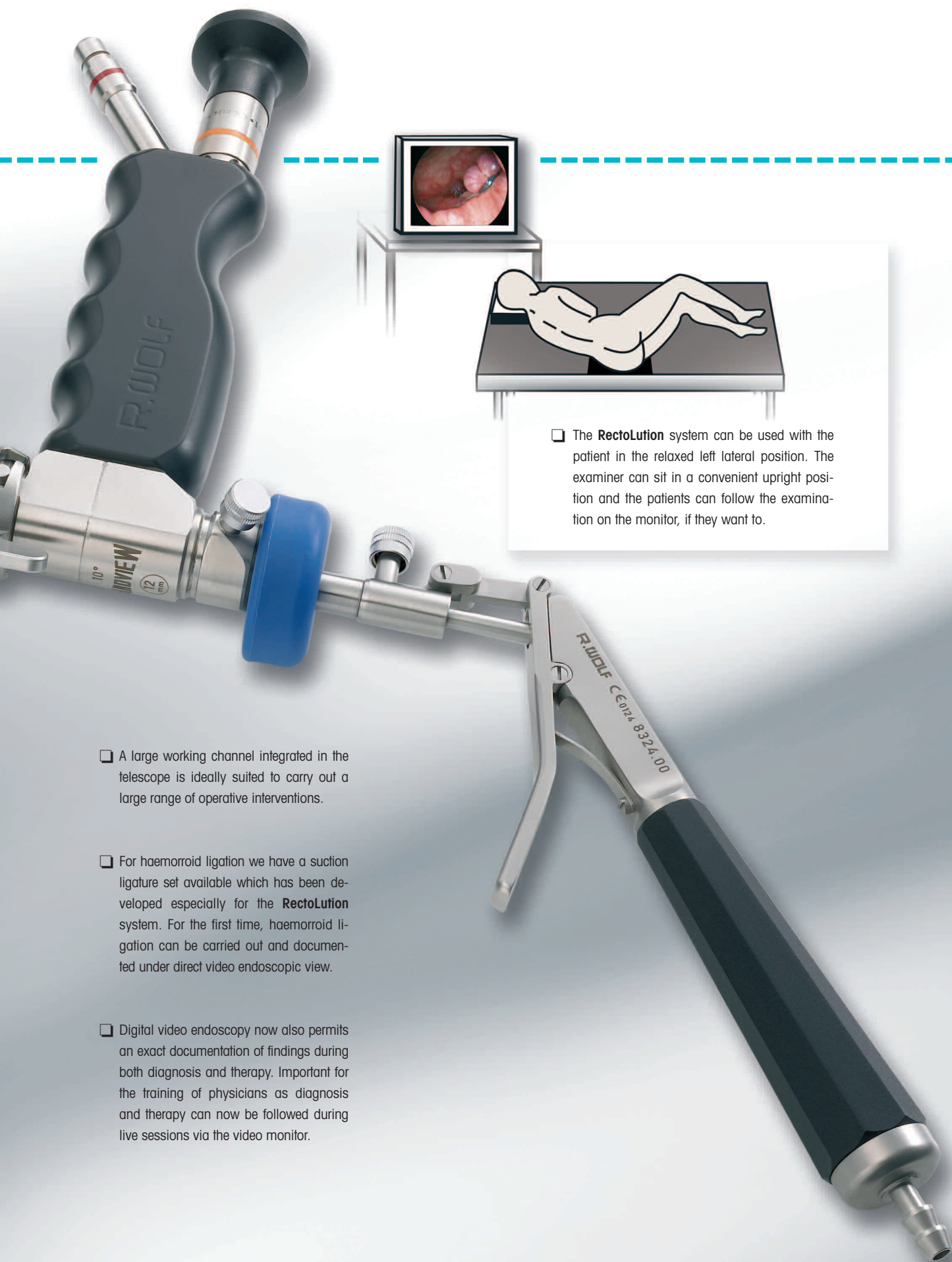
- A large oval working channel permits the introduction of a suction ligature instrument, for example, for the ligation of haemorrhoids under direct video-endoscopic view.



- In the **RectoLution** system, the patented transparent viewing tip replaces the conventional obturator, and for the first time permits endoscopy of the anal canal under natural conditions with brilliant detail recognition right down to capillary level. Even painful diseases of the anal canal can thus be examined.



- Representation of the anatomy of the anal canal through the viewing tip.



- ☐ The **RectoLution** system can be used with the patient in the relaxed left lateral position. The examiner can sit in a convenient upright position and the patients can follow the examination on the monitor, if they want to.

- ☐ A large working channel integrated in the telescope is ideally suited to carry out a large range of operative interventions.

- ☐ For haemorrhoid ligation we have a suction ligature set available which has been developed especially for the **RectoLution** system. For the first time, haemorrhoid ligation can be carried out and documented under direct video endoscopic view.

- ☐ Digital video endoscopy now also permits an exact documentation of findings during both diagnosis and therapy. Important for the training of physicians as diagnosis and therapy can now be followed during live sessions via the video monitor.

RectoLution System

		Type
RectoLution Scope 10° angle of view, 18 mm external diameter with oval working channel 16.5 x 12 mm Handle with integrated cold light connection, working length 195 mm		8830.401
Transparent viewing tip with ventilation hole, autoclavable (pack of 5)		8830.101
Transparent viewing tip , closed distally, autoclavable (pack of 5)		8830.102
RectoLution tube diameter 21 mm, working length 190 mm		8830.111
RectoLution ligator 340 mm working length including loading cone (8324.91) and ligature rings (8323.901)		8324.00
Adaptor for better sight of the inner haemorrhoids		8830120
Sealing attachment with universal sealing caps (89.601, 5 pcs.) for instruments from 8 to 15 mm, autoclavable		8830.114
Valve insert for use with automatic sealing device 8920.311		8781.981
Automatic valve incl. membrane valve (89.103, 10 pcs.) and sealing cap (89.02) for instruments of up to 5 mm		8920.311
Double bellows with Luer lock connector (886.00)		127.00
Reprocessing basket for machine reprocessing and sterilization		38046.111


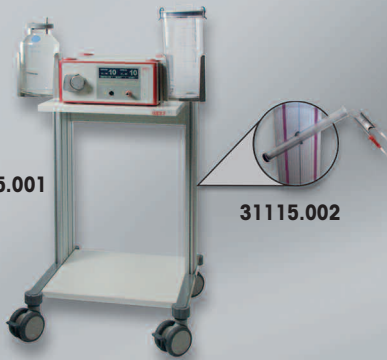
RectoLution Pump 6554

Rectum irrigation system for efficient cleaning of the rectum prior to proctoscopy and rectoscopy

- ☐ Powerful pump system with "boost" function for short-term maximum output of the unit, such as for the removal of blockages in the suction rinsing tube
- ☐ Especially helpful for the removal of larger quantities of faeces in the case of incontinent patients, who cannot evacuate their bowels, for example

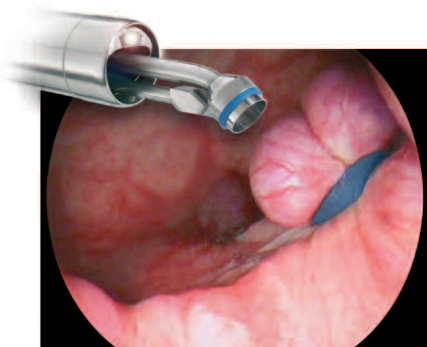
- ☐ Large lumen reusable suction rinsing hand grip with disposable tube set
- ☐ The automatic stand by function reduces the noise
- ☐ Individual programming controlled by modern microprocessor technology
- ☐ Working length 340 mm suitable also for long rectoscopes (working length 300 mm)

- ☐ Hygienic operation of the functions by means of a foot switch - both hands remain in the operating area
- ☐ Overflow protection by automatic shut-down to prevent overflow of the collection container – the display indicates a required change of container in due time
- ☐ Disposable collection bags as well as reusable collection containers can be used

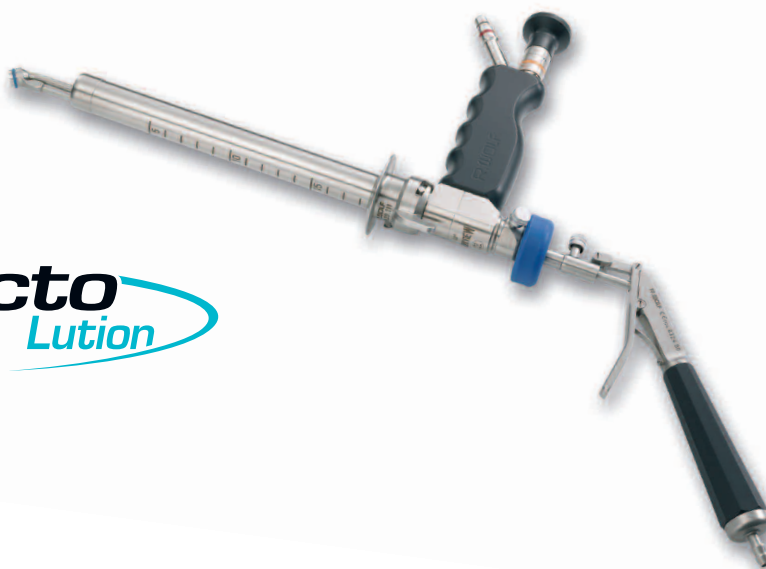
		Type
RECTO PUMP 6554 100-240 V a.c., 50 / 60 Hz consisting of: Rectum suction and irrigation device (6554.001), suction and irrigation gun, reusable, autoclavable (8554001), suction and irrigation tubing set, disposable sterile, pack of 10 (455411), sound suppressor (pack of 3) (35100.115), power cable (2440.03), water storage container (6553.21), lid (8553.211), connecting tube (8170.6554), footswitch (2030.231) bottle holders (64031.343) and disposable bacteria filter (pack of 10) (6554.010)		6554.0011
Suction and irrigation gun , reusable, autoclavable		8554001
Suction and irrigation tubing set , disposable, sterile (pack of 10)		455411
Secretion container, 2 litres , disposable, cannot be autoclaved, with cover for disposable collection bags, including 25 collection bags (4170.6563)		4170.656
Angle piece (pack of 10)		4170.6553
Collection container, 2 litres , reusable with cover, autoclavable		8170.655
Bacteria filter , disposable (pack of 10)		6554.010
Trolley 560 x 560 x 800 mm, four anti-static rollers, two fixed castors, with holder for foot switch		31115.001
Storage tube with cover, including holder on the unit trolley		31115.002
Sliding grip on the trolley		31115.003

Recto Lution System

Fax reply: +49 (0)70 43 - 35-462



Recto
Lution



- ☐ Please send us an **offer**.
- ☐ We kindly request a **product demonstration**.
- ☐ **Yes**, we are interested, but we need some time.
Please call us again in _____ weeks.

Address: _____

Stamp

Date

Signature

Addressee: **RICHARD WOLF GmbH**
Product Management, Surgery
Postfach 1164 · D-75434 Knittlingen · Phone +49 (0) 70 43 - 35-240 · Fax +49 (0) 70 43 - 35-462
benjamin.seidenspinner@richard-wolf.com · www.richard-wolf.com